



We are looking for a **dynamic and positive leader**, in our **beautiful City of Wenatchee** for the essential position of...

CHIEF OF POLICE

\$151,823 - \$186,300 Annual Salary Range

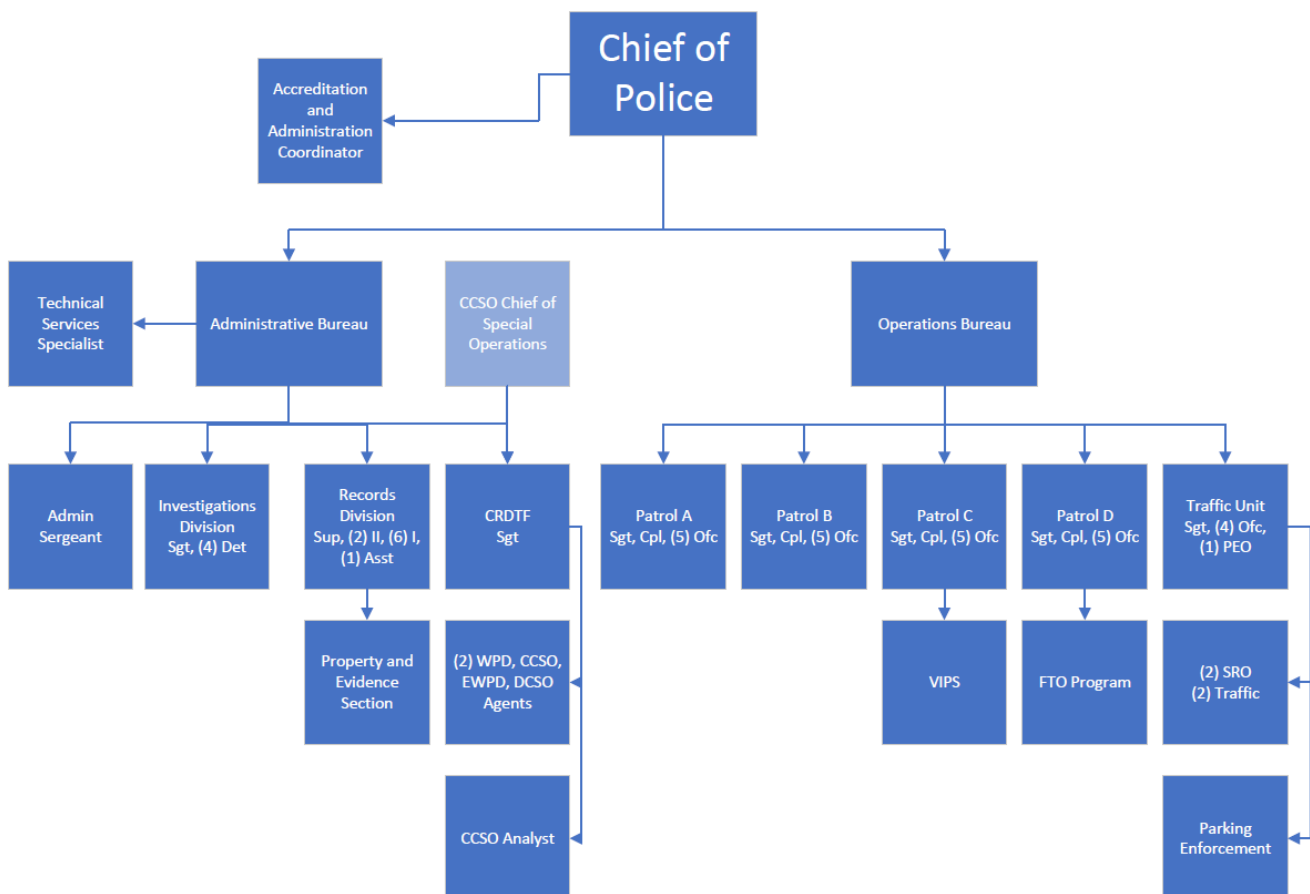
EXCELLENT BENEFITS: M/D/V, FSA/HSA, LEOFF, Deferred Comp Match, Life/AD&D, Generous PTO/Holidays

Department Summary

The Wenatchee Police Department provides a full range of law enforcement services to the City of Wenatchee and remains committed to building and maintaining public trust in tandem with community engagement. The department is a leading stakeholder in regional partnerships serving Chelan and Douglas Counties, and beyond, as a founding partner in the Columbia River Drug Task Force, the East Cascade SWAT team, Cellular Phone Forensic Team, North Central Washington Special Investigations Unit and Wenatchee School District School Resource Officers program. Through inter-local agreements, partners work collaboratively to provide enhanced services to our communities.

The department places a strong emphasis on workforce development, focusing on recruiting, hiring and retaining highly trained, quality professionals. All first-line supervisors have attended West Point Leadership model training, and all supervisory personnel have achieved Washington State Criminal Justice Training Commission certifications for leadership at the appropriate levels. Department personnel also provide training to law enforcement professionals across the state, such as interview and investigation, DUI enforcement, Patrol Tactics and firearms.

The department upholds a history of operating under industry best practices and standards and is accredited by the Washington Association of Sheriffs and Police Chiefs.



Position Summary

- Serves in an executive, supervisory and administrative law enforcement capacity.
- Directs personnel, programs and services with primary focus on employee and citizen safety, protection of life and property, law enforcement, crime prevention and development of positive relations.
- Oversees the Operations and Administrative Bureaus and supervises two bureau commanders.
- Provides strategic leadership, direction, focus and support in development and implementation of short- and long-term plans, programs and policies to achieve goals and ensure regulatory compliance.
- Provides leadership guidance in development and implementation of operational policies.
- Evaluates impacts of long-range planning, introduction of new programs and regulatory action.
- Works with law enforcement officials to coordinate investigations and resolve enforcement issues.
- Establishes and maintains positive customer and community relations.
- Seeks grant sources, completes applications and administers awards per regulations.

City of Wenatchee Government

The City of Wenatchee is a full-service City employing 190 employees. In addition to Police, other departments include Public Works, Parks, Recreation and Cultural Services, Information Technology, Human Resources, Finance and Community Development. The City operates under a Strong Mayor form of government with seven council members. Active boards and commissions advise the City Council with governance.

The Community

The City of Wenatchee is home to 35,405 people with 117,128 living in the greater Wenatchee area. Located in a beautiful valley at the confluence of the Wenatchee and Columbia Rivers and on the east slopes of the Cascade Mountain Range, the city enjoys abundant sunshine with four distinct seasons. The average rainfall is a mere 10 inches



per year making the region a focal point of Washington State for outdoor recreation. Wenatchee is the largest city in rural North Central Washington and thus provides a small-town atmosphere with big city amenities striking a great balance between rural and urban qualities of life.

Why Wenatchee is Such an Attractive Place to Live and Work



The City is surrounded by the Cascade foothills. These foothills have been largely preserved as open space with trail systems for public use. The City also has a wonderful historic downtown area adjoining a world class waterfront park and trail system. Renowned resort towns of Leavenworth and Lake Chelan are a scenic 30-minute drive away. Wenatchee serves as a medical, retail, technology, governmental and professional service hub for the largely agricultural area of North Central Washington. Combining these

core regional services with a strong fruit and wine agricultural industry yields a relatively stable economy. Many people have moved to our valley to take advantage of the outdoor recreation mecca and beautiful natural environment that makes the City an amazing place to live. People moving to Wenatchee find that the citizens are very community minded with many active service organizations. Additionally, public parks, quality arts programs and cultural experience opportunities are more plentiful than comparably sized cities. Suburban sprawl is nearly non-existent and thus commute times rarely exceed 15 minutes. For those desiring occasional amenities of major metropolitan areas, Seattle is a short scenic 3-hour drive or 30-minute flight away making Wenatchee very attractive to many people and families relocating from the Puget Sound area.



How to Apply

To view qualification requirements and complete an online application please visit:

<https://www.governmentjobs.com/careers/wenatcheewa>

Open Until Filled

Applications Reviewed Upon Receipt

A Comprehensive View of our Region



Find out more about the City at www.wenatchewa.gov.

Learn more about the Wenatchee Police Department at <https://www.wenatchewa.gov/government/police/about-us>

Tourism highlights of the region can be viewed at www.visitwenatchee.org, www.visitchelancounty.com and www.wenatchee.org.

Must See: “We Are Wenatchee Part I” <https://vimeo.com/88411706>

“We Are Wenatchee Part II” <https://vimeo.com/121429638>

“We Are Wenatchee Part III” <https://vimeo.com/208608170>

Our historic downtown is a nationally recognized Main Street with an active downtown association www.wenatcheedowntown.org.



Apple Capital of the World



Many people have moved to our valley over the last decade to take advantage of the outdoor recreation mecca and beautiful natural environment that makes the City an amazing place to live!

Forbes

Best Places to Retire. "Columbia River town 150 miles east of Seattle. Good air quality. Low serious crime rate. Walkable. No state income tax. Elevation 800 feet. Self-styled "Apple Capital of the World."



The City of Wenatchee was mentioned on the CBS Early Morning Show as one of the top five places to retire in the nation.



"AARP The Magazine" featured the City of Wenatchee as one of "10 Affordable Cities for Retirement."



"Sunset" magazine featured the Wenatchee Valley as "Washington's Gourmet Valley."

Northwest Travel

"Northwest Travel" features Highway 2 "electrifying" in an article titled "Get a Charge on the 'Electric Highway'".



Wenatchee ranked as one of the best cities in the U.S. for postgraduates to move to and start a career according to Lend EDU's report. Analyzing over 30,000 cities based on factors deemed important to postgraduates.



CountryHome

Country Home magazine, in conjunction with Sperling's Best Places, reveals that Wenatchee, WA is #5 in the Best Green Place to live in America. The City of Wenatchee is dedicated to teaching young people about alternative energy resources.

The New York Times

The New York Times ranked Wenatchee, WA as #4 in their study on safest places from Natural Disasters.



A safe, secure environment in which to live, work and raise a family is of utmost importance to many Americans. Wenatchee ranked #6 among similar sized metro areas. And #16 in Best Emerging Places to Live.



The City of Wenatchee is proud to be an equal opportunity employer. Our objective is to provide equal opportunity in all terms, conditions and privileges of employment for qualified applicants and employees without regard to race, creed, color, religion, national origin, sexual orientation, gender, gender identity, age, marital status, disability, veteran or military status, or any other characteristic protected by law.

